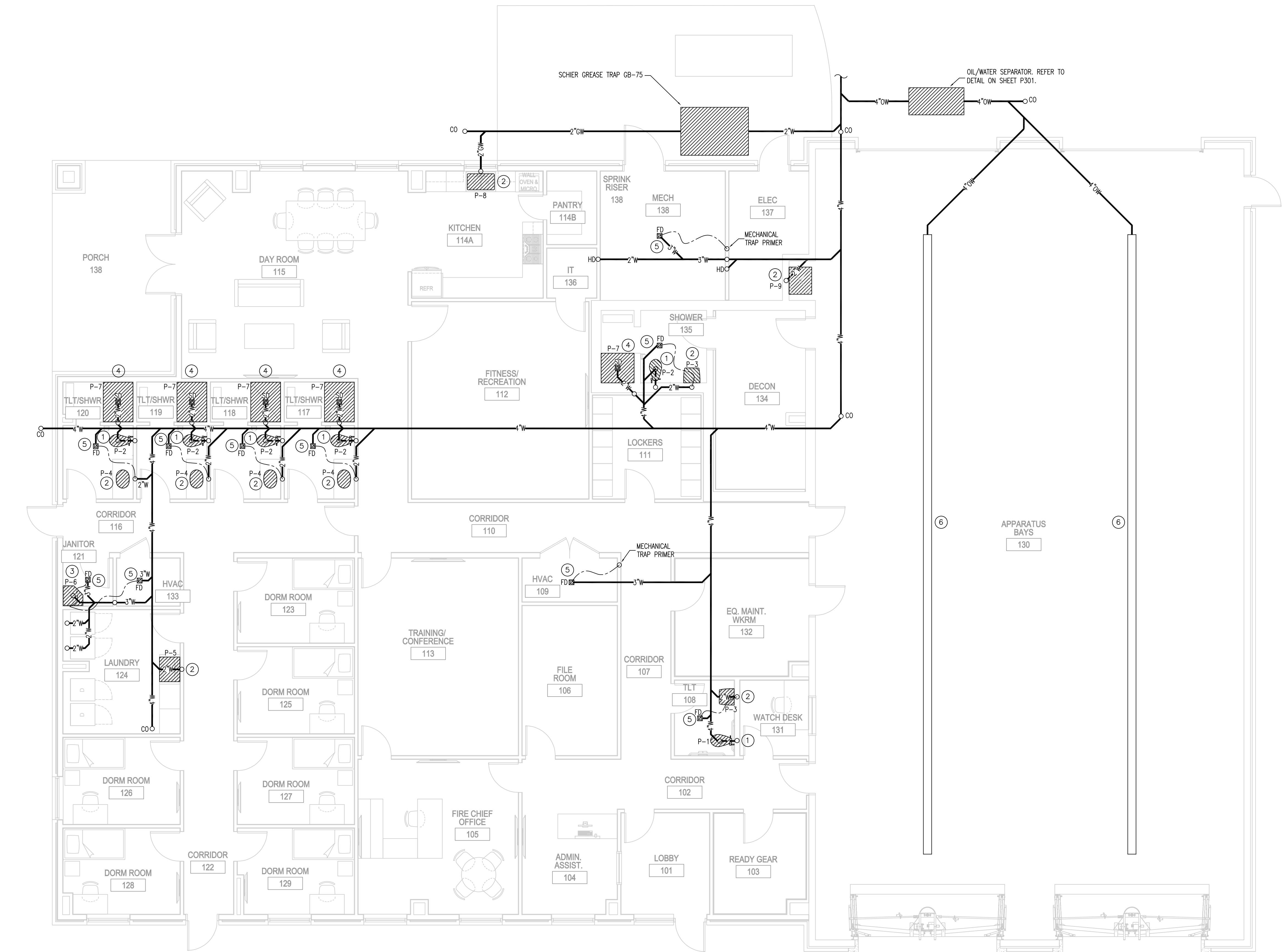


D

C

B

A



SANITARY SEWER PLAN NOTES:

- 1 4"W, 3'V TO SERVE WATER CLOSET, TYPICAL.
- 2 2"W, 2'V TO SERVE LAVATORY/SINK, TYPICAL.
- 3 3"W, 2'V TO SERVE JANITOR SINK, TYPICAL.
- 4 2"W, 2'V TO SERVE SHOWER DRAIN, TYPICAL.
- 5 3"W, 2'V, 1/2" TRAP PRIMER TO SERVE FLOOR DRAIN, TYPICAL.
- 6 TRENCH DRAIN. SMITH/ACO K100S SERIES WITH K900 INLINE CATCH BASIN WITH TRASH BUCKET OR APPROVED EQUAL PRE-SLOPED TRENCH DRAIN SYSTEM. TRENCH DRAIN SHALL HAVE CLASS F SLOTTED IRON TYPE MODEL 4610 DUCTILE IRON (PART No. 96752) EXTRA HEAVY DUTY FRAME AND GRATE, PROVIDED AND INSTALLED BY CONTRACTOR. CONTRACTOR SHALL PROVIDE AND INSTALL CHANNEL CRADLES FOR INSTALLATION. COORDINATE LENGTH, SIZE AND LOCATION WITH ARCHITECT PRIOR TO ORDERING.

PLUMBING LEGEND (SANITARY SEWER)

SYMBOL	ABBREVIATION	DECRYPTION
	W	SANITARY WASTE PIPE AND SIZE
	V	SANITARY VENT PIPE AND SIZE
	OW	OIL/WATER WASTE PIPE AND SIZE
	GW	GREASE WASTE PIPE AND SIZE
	CO	CLEAN OUT
	FD	FLOOR DRAIN AND SIZE
	HD	HUB DRAIN AND SIZE
	-	PLUMBING PLAN NOTE
	-	POINT OF CONNECTION

1 SANITARY SEWER PLAN

SCALE: 3/16" = 1'-0"



THOMPSON LUKE & ASSOCIATES, L.L.C.
10705 RIEGER RD., STE 101
BATON ROUGE, LA 70809
(225)293-9474 TLA PROJECT #25-035
Frank Saville Thompson - License No. 28854
Landon David Burns - License No. 46484

Consultant

Design Phase Acceptance

Permit/Seal



Client/Project
CITY OF NATCHITOCHES

NEW FIRE STATION NO. 3

NATCHITOCHES, LOUISIANA

Project No.: 222706059
File Name: 25-035 PLUMB - USE THIS ONE_RECOVER
Scale:
Dwn. Dsgn. Chkd. 2025.09.26
YYYY.MM.DD

Title
SANITARY
SEWER PLAN

Revision: Sheet: 1 of 5
Drawing No.

P100



Stantec (Formerly Bradley-Blevins & Associates)
1200 Brickyard Lane, Suite 400
Baton Rouge, LA 70802
Tel: 225-765-7400
www.stantec.com
Copyright Reserved
The Contractor shall verify and be responsible for all dimensions. DO NOT scale the drawing. The Contractor shall verify and be responsible for all dimensions. DO NOT scale the drawing. The Contractor shall verify and be responsible for all dimensions. DO NOT scale the drawing.